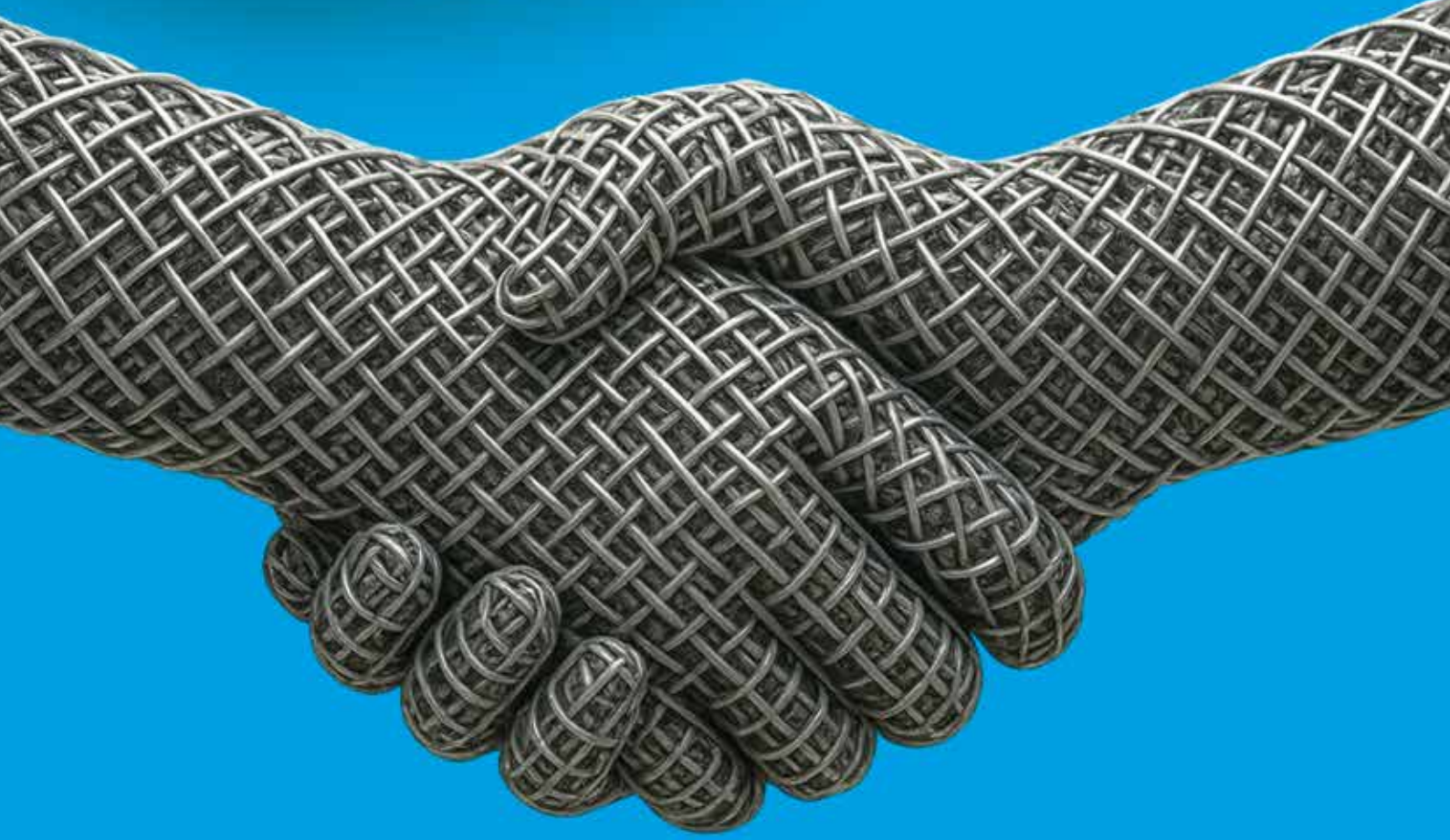


onurtas®

Ticaret ve Demir Sanayi A.Ş.



Builds The Future

www.onurtas.com.tr



444 1 223

www.onurtas.com.tr

ÇELİK HASIR

ABOUT US

Our company, which began wholesale iron trading under the name 'ONURTAŞ' in Karaköy, İstanbul, in 1978, has since expanded its product range and trading capacity to become one of the leading companies in the sector as 'Onurtaş Ticaret ve Demir Sanayi Anonim Şirketi', continuing to set the pace in the market.

Relocating to İstanbul Kartal in 1994, our company has solidified its position in the market as a well-known, trusted and honourable firm. Since 2009, it has continued to expand its product range by adding steel mesh production at its Kocaeli/Çayırova facility. Alongside construction steel, our company delivers the steel mesh it produces to construction sites using its fleet of tipper lorries. Onurtaş Ticaret ve Demir Sanayi Anonim Şirketi is one of the leading companies in the construction sector, built on years of experience and trust. Trust is fundamental for Onurtaş A.Ş. in trade.

ONURTAŞ reviews, verifies, and implements continuous improvement activities in every process in accordance with the ISO 9001:2015 Quality Management System.



ONURTAŞ MESH SPACER





WHAT IS A MESH SPACER?

A mesh spacer is an intermediate concrete reinforcement element that ensures the upper parts of concrete reinforcements are held and laid homogeneously at the height specified in the project.

AREAS OF USE

They are used to ensure that the height between double-layered steel mesh is homogeneous and maintained at the same level. They are used in ground works to serve as a corrosion allowance under the cage reinforcement created by connecting construction iron. They are used in lintel production. It is used in prefabricated elements to keep the meshes at the same level. It is used as a connecting element in concrete pipe reinforcements.

WHAT ARE THE ADVANTAGES OF MESH SPACERS?

Mesh spacers are manufactured by Onurtaş Ticaret ve Demir Sanayi Anonim Şirketi are produced and packaged in 5 mm thickness, 2000 mm length, and heights ranging from 50 mm to 300 mm, and are distributed according to site requirements. Due to their thin diameter and geometric structure, they have very high load-bearing capacity, do not bend or warp, and are designed to easily withstand static loads. The lightness of the trestles increases the speed of work during application and provides convenience.

WIRE MESH

We manufacture steel mesh in standard dimensions (5000 mm x 2150 mm) with diameters ranging from 4.0 mm to 11 mm, according to the required technical specifications.

We offer production suitable for every type of project, including Q-Type, R-Type, and TR-Type. In addition, we produce decorative fence mesh and cage mesh. We offer retail and bulk sales from our stock.

Mechanical Properties of Steel Mesh as Specified in TSE 4559:

Minimum yield strength = 500 N/mm²

Minimum tensile strength = 550 N/mm² Minimum elongation at break = 8%, 5% (TS 4559)

Shear strength at knots: $T_o = 0.30 \times A_s \times F \times G$

*G: Gravitational acceleration

*F: Breaking force

*A_s: Surface area

*T_o: Shear force

SPECIAL STEEL MESH

Your orders for steel mesh designed according to the project in the desired dimensions (length, width, mesh spacing, front-back, right-left bar lengths and bar diameter) are manufactured with care and in accordance with TS 4559 standards.

STANDARD STEEL MESH

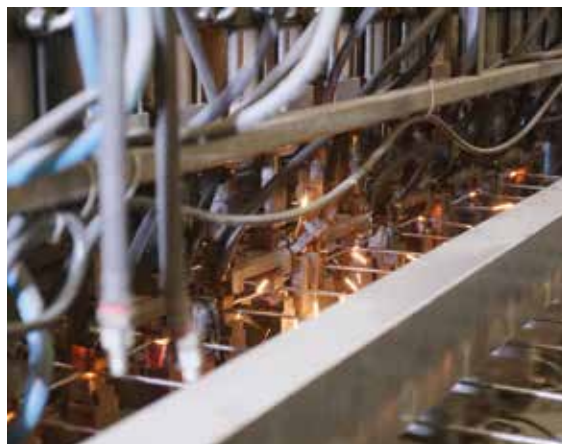
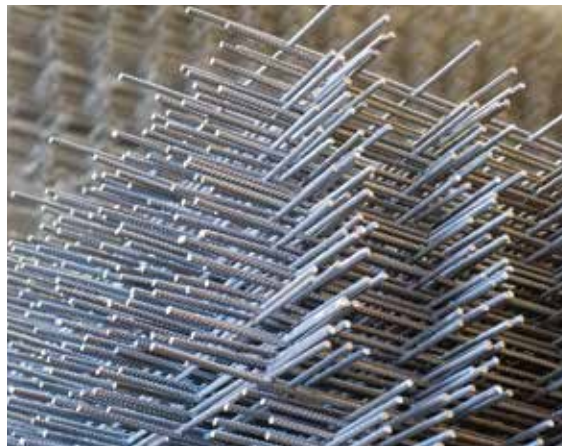
We have various diameters (150mm x 150mm) of 'Q type' steel mesh in stock (5000mm x 2150mm). Production is carried out in dimensions and diameters suitable for the project. All types of steel mesh between 4.5 mm and 11 mm in diameter, including 'Q, R and TR' types, are produced to order.

FENCE MESH

Our fence mesh is available in stock in sizes of 5000mm x 2150mm and 5000mm x 1500mm with 150mm x 50mm mesh spacing. If required, it can be produced in the desired dimensions and diameter according to the project or the area of use.

CAGE MESH

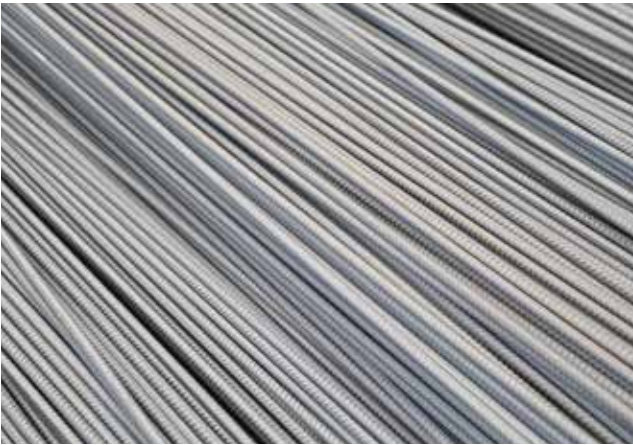
Cage mesh, utilised for its decorative and protective properties, is manufactured by our company and is available for retail and wholesale supply. Cage mesh is available in two separate sizes, packaged with 50 x 50 mm mesh spacing, in dimensions of 2000 x 000 x 4 mm and 4000 x 1000 x 4 mm.





REBAR





REBAR

Supplied cut to size from standard 12000 mm ribbed construction steel bars in the required diameter and length to suit the project. Additionally, in line with specific requests, ribbed or straight bars cut to the required length from thin-diameter steel (4.5 mm - 11 mm) are packaged and prepared according to the order tonnage or quantity.

With years of experience and trust, we offer ribbed construction steel in various diameters. Steel is supplied in diameters suitable for the project and, if required, cut to length (12m).

REBAR FEATERS

Diameter (mm)	1000 mm / Kg	(12000 mm)(Kg)
8,00	0,395	4,742
10,00	0,618	7,410
12,00	0,889	10,670
14,00	1,210	14,524
16,00	1,581	18,970
18,00	2,001	24,008
20,00	2,470	29,640
22,00	2,989	35,464
24,00	3,557	42,682
25,00	3,859	46,313
26,00	4,174	50,092
28,00	4,841	58,094
32,00	6,323	75,878

RIBBED AND SMOOTH WIRE ROD



RIBBED AND SMOOTH WIRE ROD

Ribbed steel is one of the most preferred construction materials in the construction industry. Thanks to its durability and high adhesion (bonding strength) to concrete, it is of great importance for the safety and longevity of structures. During the production process, it is drawn from a straight coil and a special ribbed pattern is stamped onto its surface. These ribs increase the load-bearing capacity of the structure by ensuring that the concrete and steel interlock with each other.

Our company manufactures cold drawn ribbed wire rod in modern facilities equipped with high technology. Our products are manufactured in different diameters and sizes according to our customers' needs and are carefully wrapped and packaged. They are, available in diameters ranging from 4.5 mm to 11 mm, is prepared in the required quantities and made ready for shipment in a short time.

Our production processes are based on compliance with both national standards and international quality norms, offering durable, reliable products that are fully compatible with your projects. By providing the fast supply, reliable quality and affordable prices required by the construction industry, we contribute to projects of all scales.



STIRRUPS

STIRRUPS

Our stirrups, trestles, hoops and rings are manufactured to meet the specific requirements of your projects, with quality and reliability at the forefront. Stirrups are produced in the desired diameters and dimensions, bent on fully automatic machines from ribbed or plain wire rods, thus providing fast and precise solutions for both standard and customised requirements.

In addition to wire rods, our company also manufactures stirrups cut and bent from 12,000 mm standard construction steel bars. This provides the variety required for different applications in your projects and contributes to saving time on site.

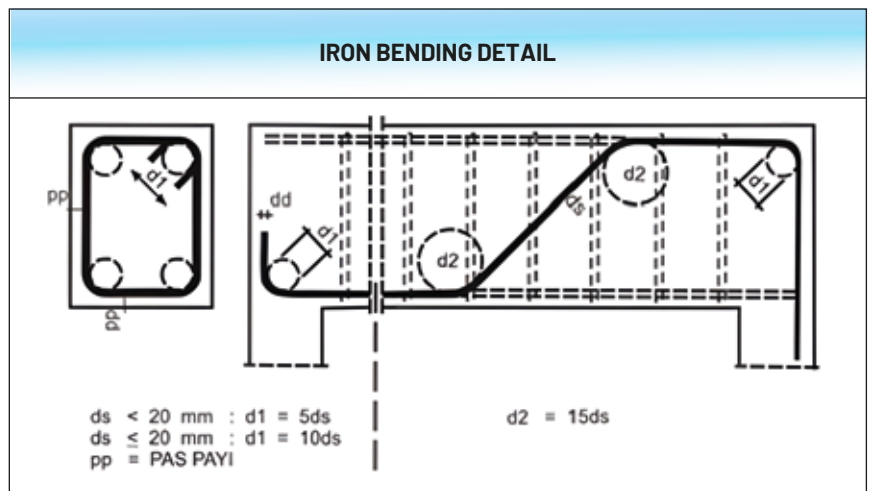
With our modern production technologies, use of high-quality raw materials, and experienced team, we offer durable and standard-compliant products suitable for all types of construction projects. Our stirrups and complementary products, which can be reliably chosen for both small-scale and large-scale projects, contribute to the strength and longevity of structures.

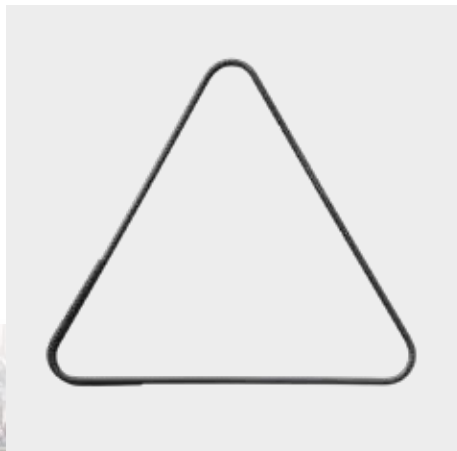
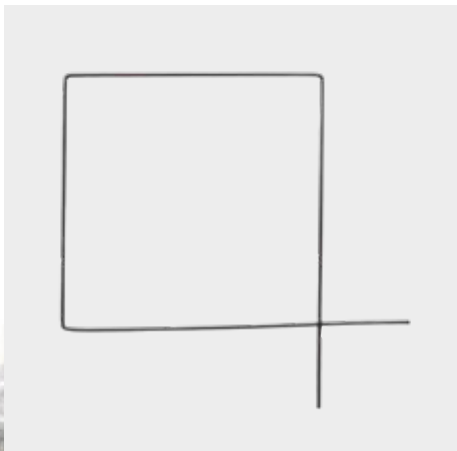
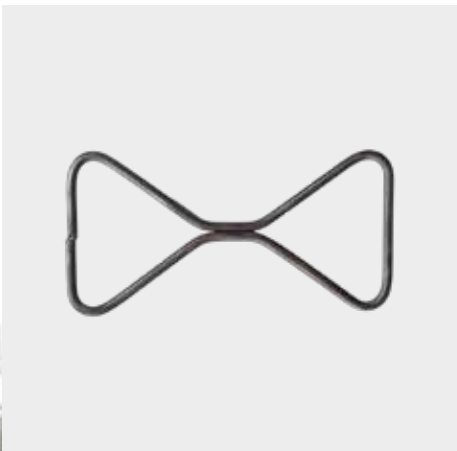
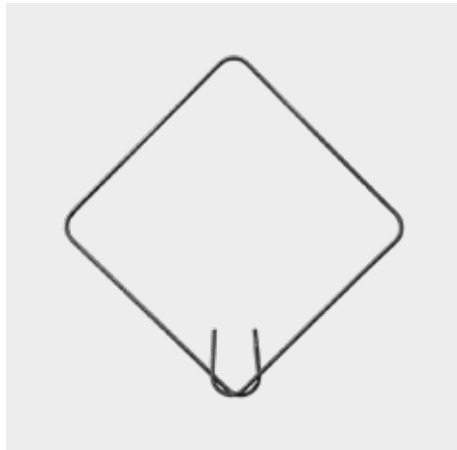
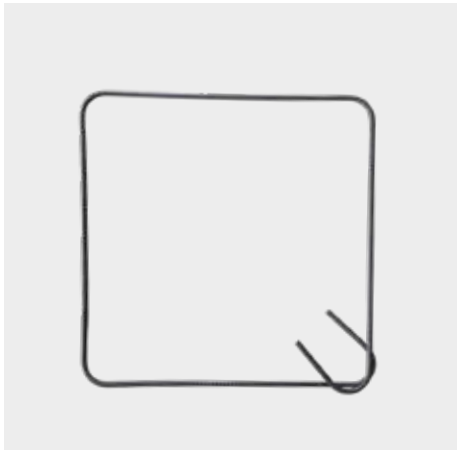
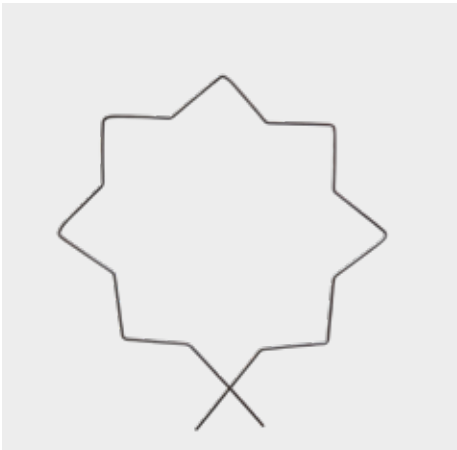


REINFORCED AND FLAT CONSTRUCTION STEEL MEASUREMENT TABLE		
Diameters(mm)	mt/kg	12mt/kg
8 mm	0.395	4.750
10 mm	0.617	7,404
12 mm	0.888	10.656
14 mm	1.208	14,496
16 mm	1.578	18.936
18 mm	1.998	23.976
20 mm	2.466	29.592
22 mm	2.984	35.808
24 mm	3.551	42.612
25 mm	3.853	46.236
26 mm	4.168	50.016
28 mm	4.834	58.008
30 mm	5.549	66.588
32 mm	6.313	75.756
36 mm	7.990	95.880
40 mm	9,865	118.380

TSE 708 III A RIBBED STEEL BARS BENDING MANDREL DIAMETERS								
Ø 8 mm	Ø 10 mm	Ø 12 mm	Ø 14 mm	Ø 16 mm	Ø 18 mm	Ø 20 mm	Ø 22 mm	Ø 26 mm
5d*	5d	5d	6d	6d	6d	8d	8d	8d
4 cm	5 cm	6 cm	8.4 cm	9.6 cm	10.8 cm	16 cm	17.6 cm	20.8 cm

TSE 708 III A MECHANICAL TEST VALUES OF RIBBED STEEL BARS					
Diameter of Iron	Min. Flow Resistance Re-Rp 0.2 (N/mm ²)	Min. Tensile Strength (N/mm ²)	Minimum Tensile Strength (Rm/Re)	Mandrel Diameter for Bending Test (Bending Angle 180 Degrees)	Minimum Elongation at Break
Ø 6 mm Ø 40 mm	420	500	1.10	5d	(6≤d≤28 (a)) %:12 32≤d40 Lo= 10xd): 10





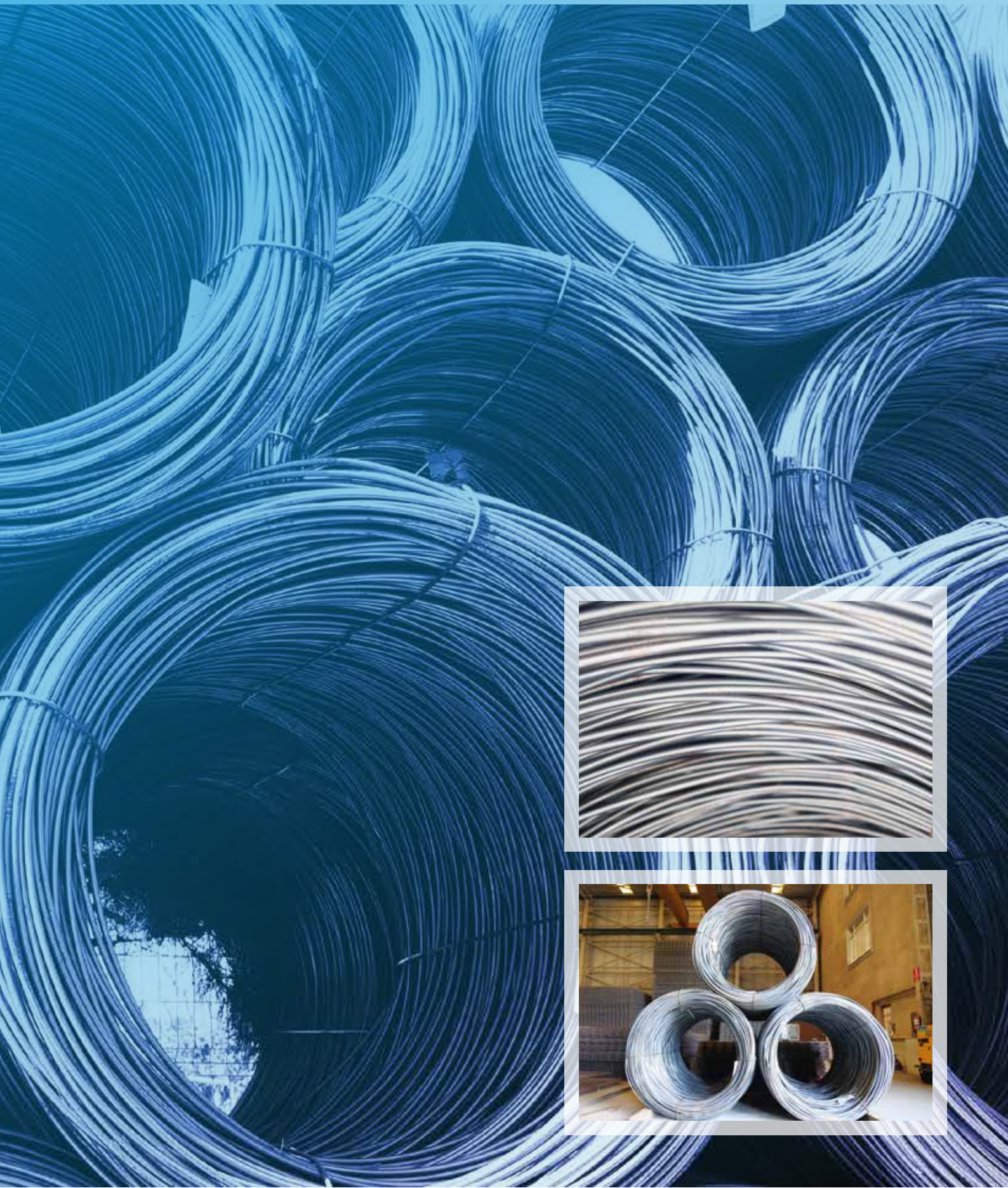
WIRE AND RIBBED WIRE ROD

WIRE ROD

Wire Rod is a type of flat steel bar produced in various diameters, which is widely used in the construction and industrial sectors. Manufactured using high-quality raw materials, flat rebar is a key product favoured in many areas due to its strength and workability. Our company manufactures and sells cold-drawn ribbed and flat coils, rolled from flat steel in the desired diameters and dimensions to meet the needs of different projects. Our products are carefully prepared and bundled into rolls ready for shipment and delivered safely according to our customers' requirements.

RIBBED WIRE ROD

Ribbed steel is one of the most preferred construction materials in the construction industry. Thanks to its durability and high adhesion (grip strength) to concrete, it is of great importance for the safety and longevity of structures. During the production process, it is rolled from flat steel and a special ribbed pattern is stamped onto its surface. These ribs interlock with the concrete, increasing the load-bearing capacity of the structure.



OUR QUALITY POLICY - OUR QUALITY CERTIFICATES



As ONURTAŞ, our primary objective is to accurately understand the needs of the steel mesh manufacturing sector and to produce the most suitable solutions for these needs in an economical, efficient and sustainable manner. All our activities are carried out transparently and responsibly, in accordance with applicable laws, regulations and the national and international standards to which we are bound.

Our understanding of quality is evident not only in the production process but also in every area, from customer relations to the supply chain, occupational health and safety to environmentally conscious production. In this context, maintaining the highest level of customer satisfaction and being a reliable solution partner in every project is our company's primary goal.

Driven by a vision focused on development, our company ensures that all our employees embrace our Quality Policy, take ownership of it, and reflect it in their practices. In this regard, the continuous training of our team, the enhancement of their knowledge base, and the contribution to their personal development are integral parts of our corporate culture.

Our Quality Management System encompasses not only the control of existing processes but also the mission of continuous improvement, development, and innovative solutions in steel mesh manufacturing. To this end, the provision of all necessary resources, their effective use, and the integration of modern production technologies are among our company's fundamental strategies.

ONURTAŞ meticulously implements, regularly reviews, and verifies the ISO 9001:2015 Quality Management System in all its processes. Thus, continuous improvement activities are not just a goal but have become a fundamental principle that ensures the continuity of our corporate culture.



TÜRK STANDARDLARI ENSTİTÜSÜ
TÜRK STANDARDLARINA UYGUNLUK BELGESİ
TURKISH STANDARDS INSTITUTION
CERTIFICATE OF CONFORMITY TO TURKISH STANDARDS

Markanın Tescimi / Registration of the Mark
TSE TSE

(69990-TSE-0103)lu belge devresi | ONURTAŞ TİCARET VE DEMİR SANAYİ
İLÜLİ TÜRK STANDARDI/RELATED TURKISH STANDARD) TS 4508 / 01.10.1980

Ö İŞARETLEMESİ BİLGİLERİ

Bu, en sayfa 69990-TSE-0103 numaralı Türk Standardlarına Uygunluk Belgesi ile belgesiz kullanılır. Türk Standardlarına Uygunluk Belgesi her yıl için yenisiyle değiştirilmelidir.

Ö İŞARET VERİŞ TARİHİ: 10.01.2023

UYGUNLUK TEYİT SİSTEMİ: Sistem 1 plus

Özetlemi yaparak piyasaya arz etdiğiniz ürünler üzerine "Ö" İşareti Belgesine "sadece T.C. Çamaşır ve Bulaşık Makinesi" başlıklarından yazılmayan "Yapı Malzemelerinin Tabii Olacağı Kriterler Hakkında Yönetmelik" çerçevesinde "Yapı Malzemelerinin Tabii Olacağı Kriterler Hakkında Yönetmelik" kapsamında TSE Standartları Enstitüsünün (TSE) Gözetim/İzleme Uygunluk Değerlendirmesi ve Belgelendirme İşletimi Hakkında TMMOB'ün düzenlediği belgelendirme atak. Bu belge kapsamında yer alan ürünler üzerine "Ö" İşareti Belgesinin uygulanmasıdır.

İmza/Signature

10.01.2023

Belgelendirme Merkezi Başkanı Adına

AKDOĞAN BULUT

İSTANBUL BELGELENDİRME MÜDÜRÜ V.

"Bu belge belgelendirme sistemi, ürünün güvenli kullanımını sağlamak için belgelendirme için düzenlenmiştir.
"This certificate is issued for the purpose of ensuring the safe use of the product.
"Bu belge belgelendirme sistemi, ürünün güvenli kullanımını sağlamak için belgelendirme için düzenlenmiştir.
"This certificate is issued for the purpose of ensuring the safe use of the product."

<http://www.tse.gov.tr> adresinde belgelendirme sistemi için ayrıntılı bilgi için başvuru yapılabilir.



2 / 2



TÜRK STANDARDLARI ENSTİTÜSÜ
TÜRK STANDARDLARINA UYGUNLUK BELGESİ
TURKISH STANDARDS INSTITUTION
CERTIFICATE OF CONFORMITY TO TURKISH STANDARDS

Markanın Tescimi / Registration of the Mark
TSE TSE

BELGE NUMARASI

REFERENCE NUMBER OF LICENCE 69990-TSE-0103

BELGENİN İLK VERİŞ TARİHİ

DATE OF FIRST ISSUE OF LICENCE 10.01.2023

BELGENİN SON GEÇERLİLİK TARİHİ

LICENCE VALID UNTIL 11.01.2026

BELGE SAHİBİ KURULUŞUN ADI

NAME OF THE LICENCE HOLDER ONURTAŞ TİCARET VE DEMİR SANAYİ

BELGE SAHİBİ KURULUŞUN ADRESİ

ADDRESS OF THE LICENCE HOLDER ŞEKERPAŞA ÇUMHURİYET MAH. KARAYEL SOK. NO:15 /

ÜRETİM YERİ ADI

NAME OF THE MANUFACTURING PLACE ÇUMHURİYET MAHALLESİ KARAYEL SOKAK NO:15 ŞEKERPAŞA-

ÜRETİM YERİ ADRESİ

ADDRESS OF THE MANUFACTURING PLACE ÇAYIROVA KOCALITURNEYE

İPTAL EDİLEN BELGE NUMARASI (varsa)

INDICATION OF SUPERSEDED LICENCE (if any) 69990-TSE-0103

TEŞCİLLİ TİCARİ MARKASI

REGISTERED TRADE MARK ONURTAŞ TİCARET VE DEMİR SAN. ANONİM ŞİRKETİ

İLÜLİ TÜRK STANDARDI

ISRAİLİ TURKISH STANDARD TS 4508 / 01.10.1980

BELGE KAPSAMI

SCOPE OF LICENCE KAPINAVLİ BİRLEŞİMLİYEV, NERVÜRLÜ ÇELİK ÇUBUKLARDAN YAPILAN/IN MINİBİM KOPMA UZAMASININ İSİ (1) OLAN, 41 x 26 (TÜR), ANMA ÇAPININ 4.0 mm (DİREKTÖRÜN 0 10.5 mm (DİREKTÖR ÇELİK HAZIRLAR, İSİ 11.01.2024).

İmza/Signature

10.01.2023

Belgelendirme Merkezi Başkanı Adına

AKDOĞAN BULUT

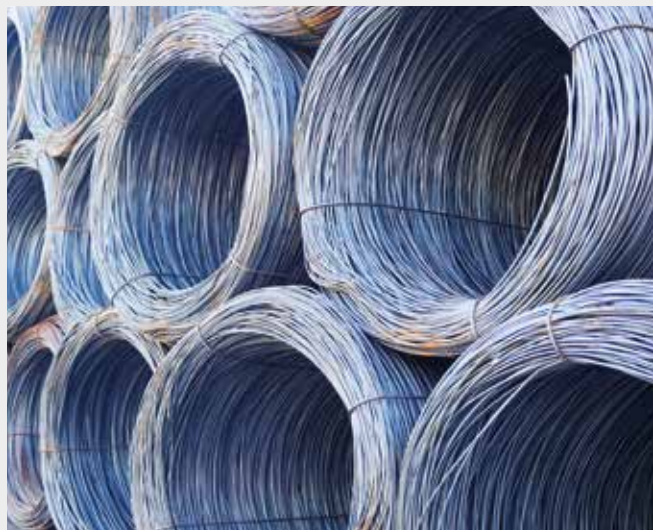
İSTANBUL BELGELENDİRME MÜDÜRÜ V.

"Bu belge belgelendirme sistemi, ürünün güvenli kullanımını sağlamak için belgelendirme için düzenlenmiştir.
"This certificate is issued for the purpose of ensuring the safe use of the product.
"Bu belge belgelendirme sistemi, ürünün güvenli kullanımını sağlamak için belgelendirme için düzenlenmiştir.
"This certificate is issued for the purpose of ensuring the safe use of the product."

<http://www.tse.gov.tr> adresinde belgelendirme sistemi için ayrıntılı bilgi için başvuru yapılabilir.



2 / 2



Builds The Future

onurtas®

Ticaret ve Demir Sanayi A.Ş.

📍 Cumhuriyet Mah. Karayel Sk. No:15
Şekerpınar-Çayırova / Kocaeli

☎ **444 1 223**

✉ satis@onurtas.com.tr

🌐 www.onurtas.com.tr



📱 [onurtasdemircelikhasir](https://www.instagram.com/onurtasdemircelikhasir)

📘 [onurtasticaretvedemirsanas](https://www.facebook.com/onurtasticaretvedemirsanas)

📌 [onurtas-ticaret-ve-demir-sanayi-anonim-sirketi](https://www.linkedin.com/company/onurtas-ticaret-ve-demir-sanayi-anonim-sirketi)